



COMMUNITY MEETING #5

April 24, 2018

INTRODUCTION

— THE MASTER PLAN TEAM

San Mateo County Parks

- » Gates + Associates
(Park & Recreation Planning/Landscape Architecture)
- » WRA Environmental Consultants
(Biological Resources Assessment)
- » Pacific Watershed Associates
(Erosion Inventory and Assessment)

MEETING OVERVIEW

TODAY'S AGENDA

1. Project Update
2. General Questions & Comments
3. Break-Out Review and Comments on Preliminary Recommendations
4. Next Steps - Comments will be recorded and considered for incorporation into the Draft Master Plan. Comments will be provided to San Mateo County Parks and Recreation Committee at their review of the Plan.

PROJECT UPDATE

SCOPE OF MASTER PLAN DOCUMENT

Existing Conditions Assessment

- » Biological Assessment
- » Sediment Source Reduction Plan
- » Existing Uses

Community Outreach Process/Input

Preferred Plan

- » Park Uses and Amenities
- » Trail Plan
- » Signage and Interpretive Opportunities
- » Resource Management Plan
- » Park Management Plan

Implementation and Phasing



PROJECT UPDATE

EFFORTS TO DATE

Mid-Coast Recreational Needs Assessment (2002)

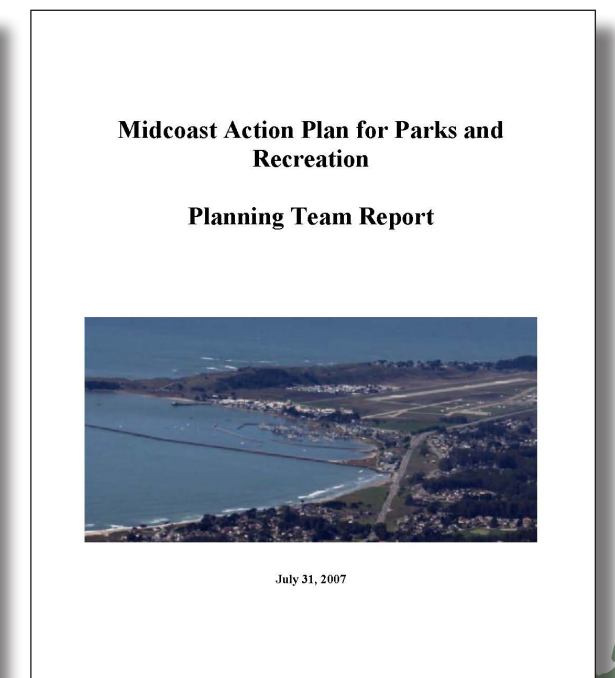
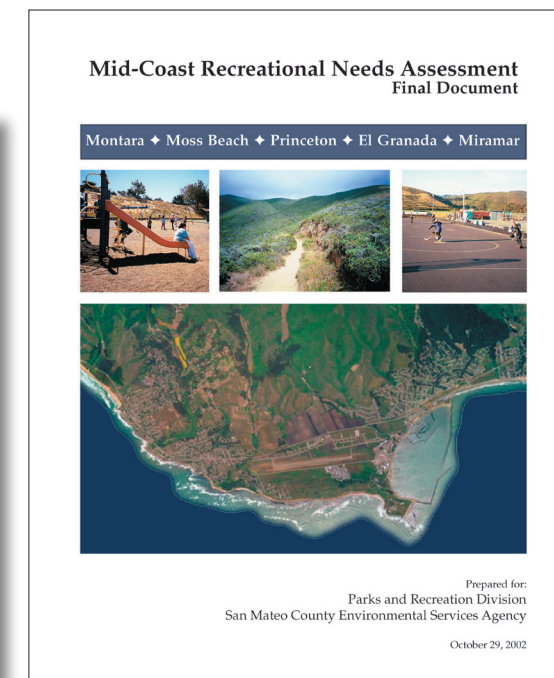
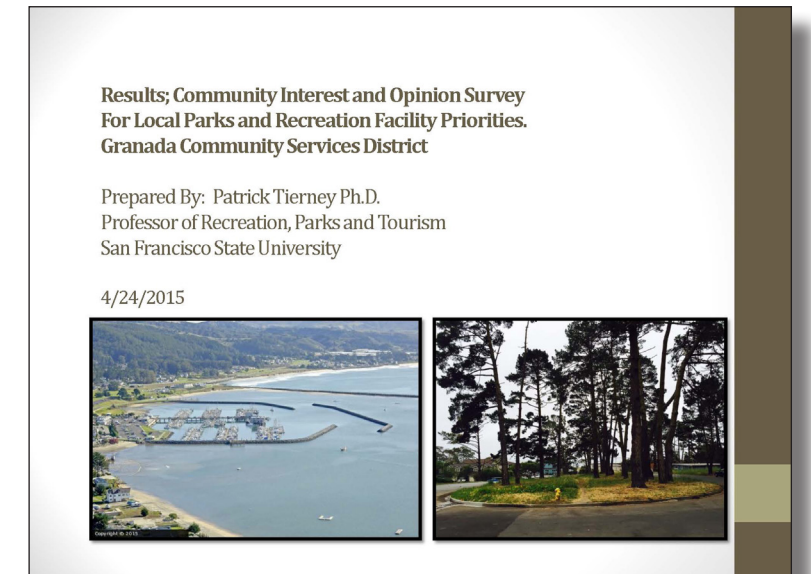
Midcoast Park Action Plan (2007)

Granada Community Services District Survey (2016)

County Parks Visitor Survey (2016)

Consistent Priorities

- » Hiking
- » Dog Walking
- » Biking
- » Picnic
- » Playgrounds



PROJECT UPDATE

PARALLEL TRAIL



Parallel Trail will be in Caltrans R.O.W., managed by County



PROJECT UPDATE

COMMUNITY MEETING #1:

What Recreational Features Do We Want?

COMMUNITY MEETING #2:

What Features are Our Priorities?



PRIORITY MATRIX					
	PARK ACTIVITY	VERY IMPORTANT	SOME WHAT IMPORTANT	NOT IMPORTANT	RANKING
 Fenced Off Leash Dog Park		15			2
 Pump Track		20			1
 Additional Parking		11			3
 Bocce Courts		5	7		5
 Disc Golf		8			4
 Pickleball		12		7	6
 Other	Horse shoes Stage Area Horse Access Signage/Wetland Restoration	8 8 7 7			



PROJECT UPDATE

ONLINE SURVEY RESULTS

PARK IMPROVEMENTS: HOW IMPORTANT ARE THE FOLLOWING POTENTIAL PARK IMPROVEMENTS?

TOTAL # OF ONLINE SURVEY PARTICIPANTS: 235

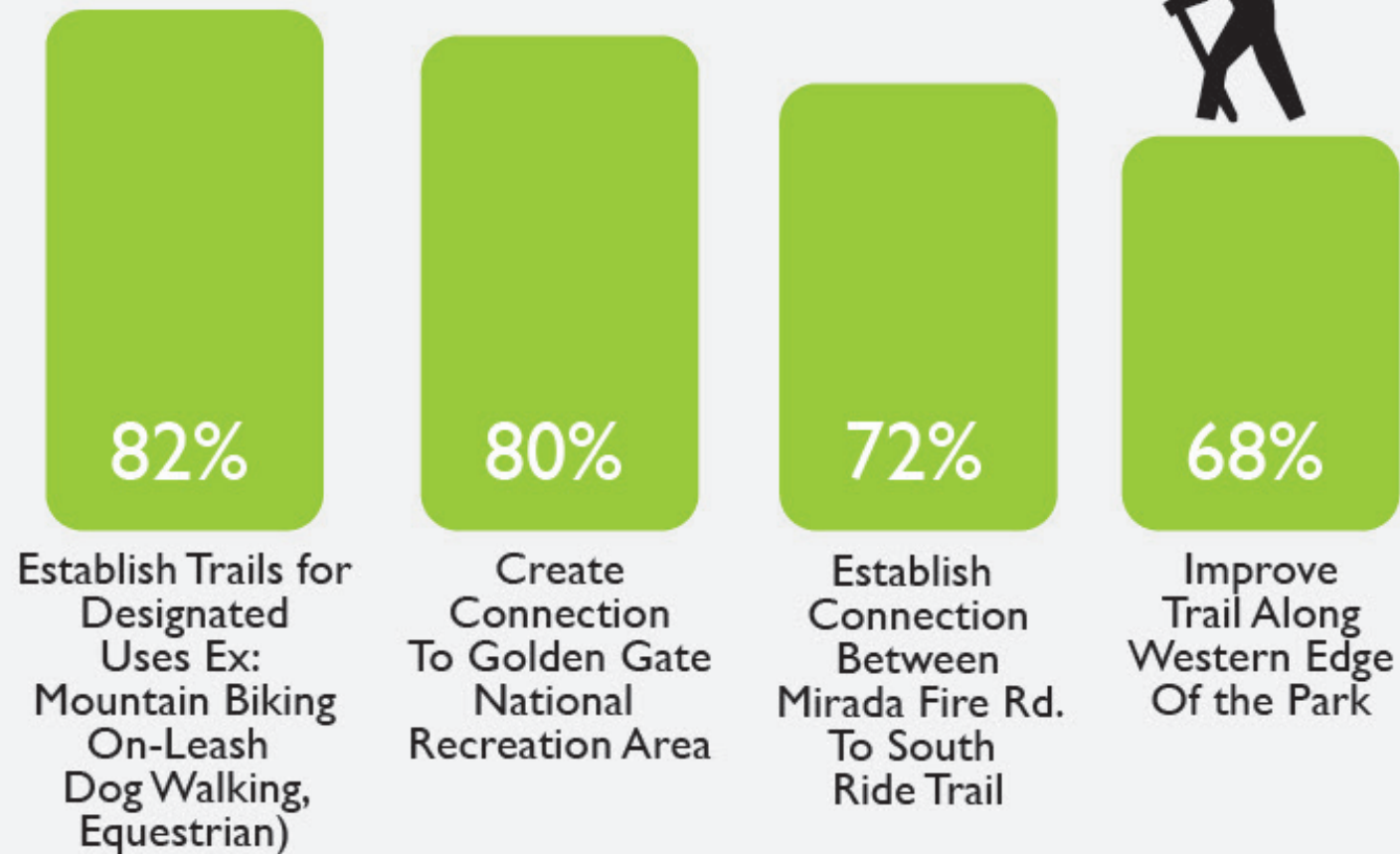


Park Recreational and Interpretive Improvements

PROJECT UPDATE

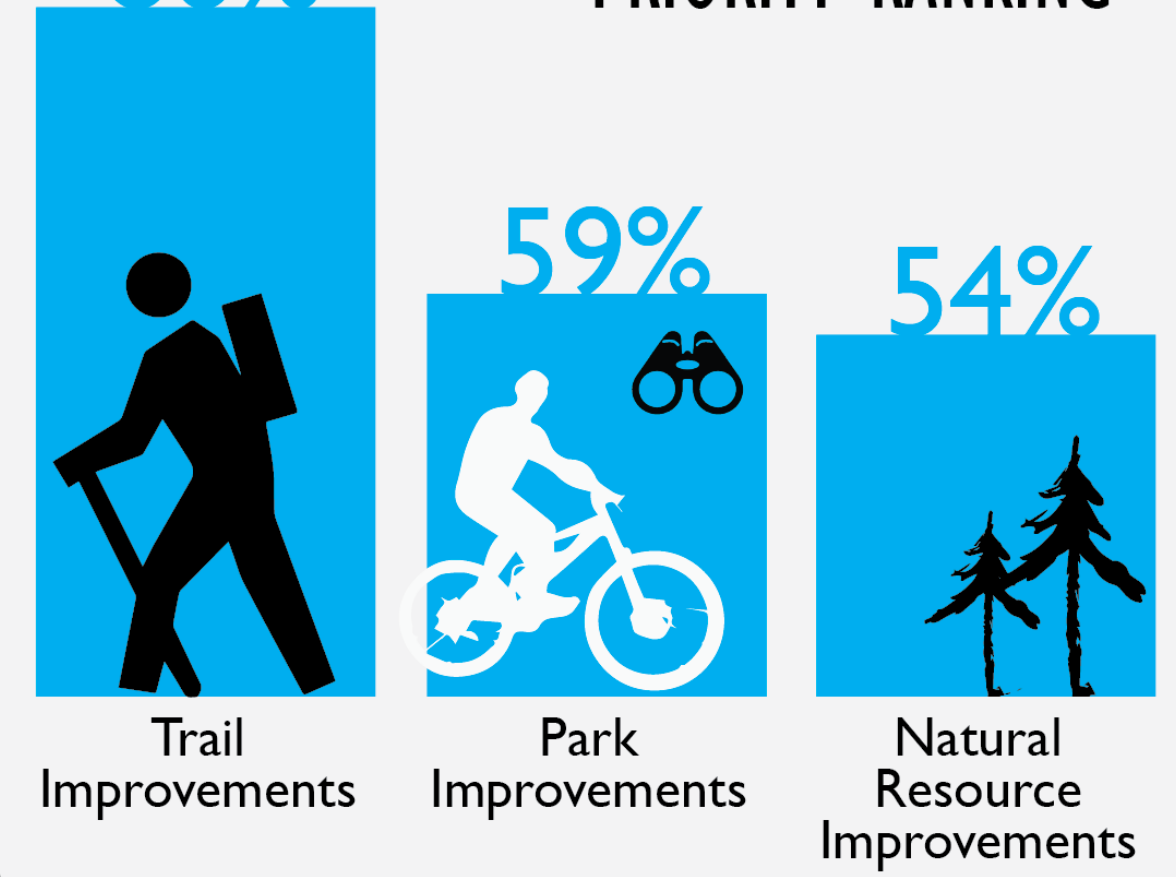
ONLINE SURVEY RESULTS

TRAIL IMPROVEMENTS: HOW IMPORTANT ARE THE FOLLOWING TRAIL IMPROVEMENTS?



86%

PRIORITY RANKING



PROJECT UPDATE

COMMUNITY MEETING #3:

On Site Review



COMMUNITY MEETING #4:

Preferred Alternative



RECOMMENDATIONS

NATURAL RESOURCE MANAGEMENT

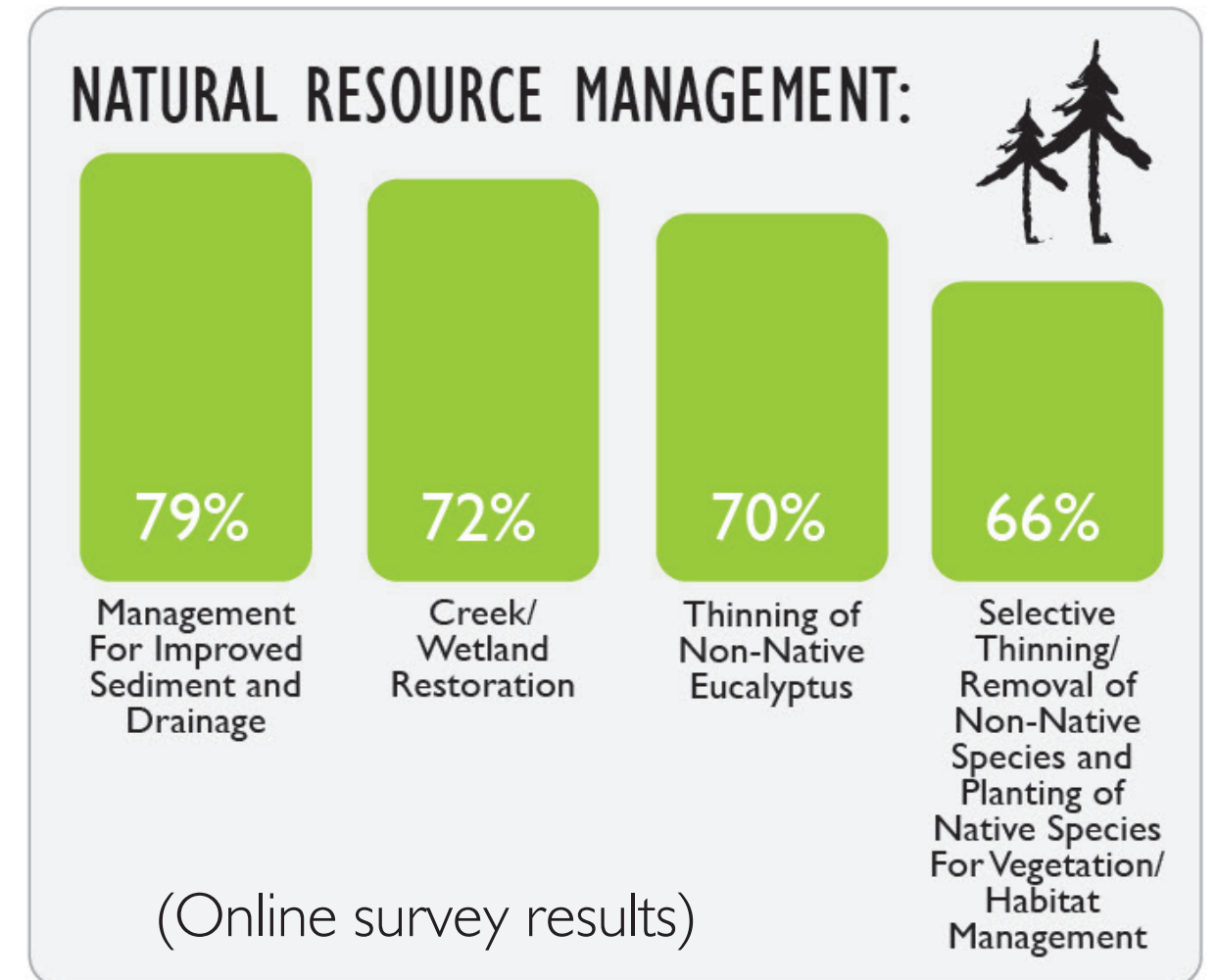


Quarry Park Overlook



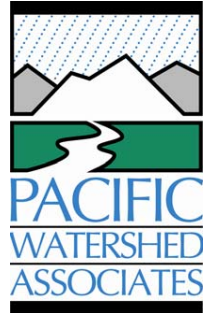
Pond

- » Relocate Overlook
- » Retain existing dam and pond, per PWA Study
 - Drainage functions
 - Program opportunities (rest area, educational signage)



RECOMMENDATIONS

DAM AND POND



Draft Quarry Park Pond Stability Analysis
Quarry Park San Mateo County, California

PWA Draft Report No. 181028502
February 2018



- » Dam and pond assessment completed
- » Dam is stable and pond can be retained
 - Inspect and maintain pond drains
 - Install culvert spillway and emergency spillway
 - Remove large trees growing on the embankment (keep stumps)
 - Inspect features annually



—Prepared for:
Gail Donaldson, Associate Principal
Gates & Associates
2671 Crow Canyon Road, San Ramon, CA 94583

Sam Herzberg, Senior Planner
San Mateo County Parks Department
455 County Center, Redwood City, CA 94063

Prepared by:
Brad Job, California Registered Civil Engineer #C55699
Tara Zuroweste, Senior Geologist, PG # 8418
Clay Allison, Project Geologist
Danny Hagans, Principal Earth Scientist
Pacific Watershed Associates Inc.
P.O. Box 2070, Petaluma, CA 94953
bradj@pacificwatershed.com / (707) 773-1385

RECOMMENDATIONS

NATURAL RESOURCE MANAGEMENT



Erosion repair example



Stream restoration example



Area of concern example - bluff erosion

» Priorities

- Repair culverts and other erosion causing features
- Restore stream
- Specific areas of concern

RECOMMENDATIONS

NATURAL RESOURCE MANAGEMENT: AREAS OF CONCERN

- Protect high quality habitat
- Transition a gallery forest
- Shaded fuel breaks along roads



RECOMMENDATIONS

HABITAT MANAGEMENT



Northern Coastal Scrub

- » Preserve/enhance/expand northern coastal scrub areas on edges of site
- » Pursue enhancement opportunities that synergize with other repairs or improvements
 - Example: Stream restoration where erosion repair needed
 - Example: Remove invasives when transitioning to gallery forest



Potential seasonal wetland



RECOMMENDATIONS

HABITAT MANAGEMENT



California Mouse



Burrowing Owl

» Preserve and protect species found in the park



Long-Tailed Weasel



San Francisco Dusky Footed Wood Rat

RECOMMENDATIONS

FIRE MANAGEMENT



- » Thin eucalyptus to reduce fire risk, create shaded breaks along trails
- » Maintain existing fire buffers on north and south sides of the park

RECOMMENDATIONS: TRAILS

DECOMMISSION TRAILS

» Decommission non-essential problem trails



RECOMMENDATIONS: TRAILS

MULTI-USE TRAILS

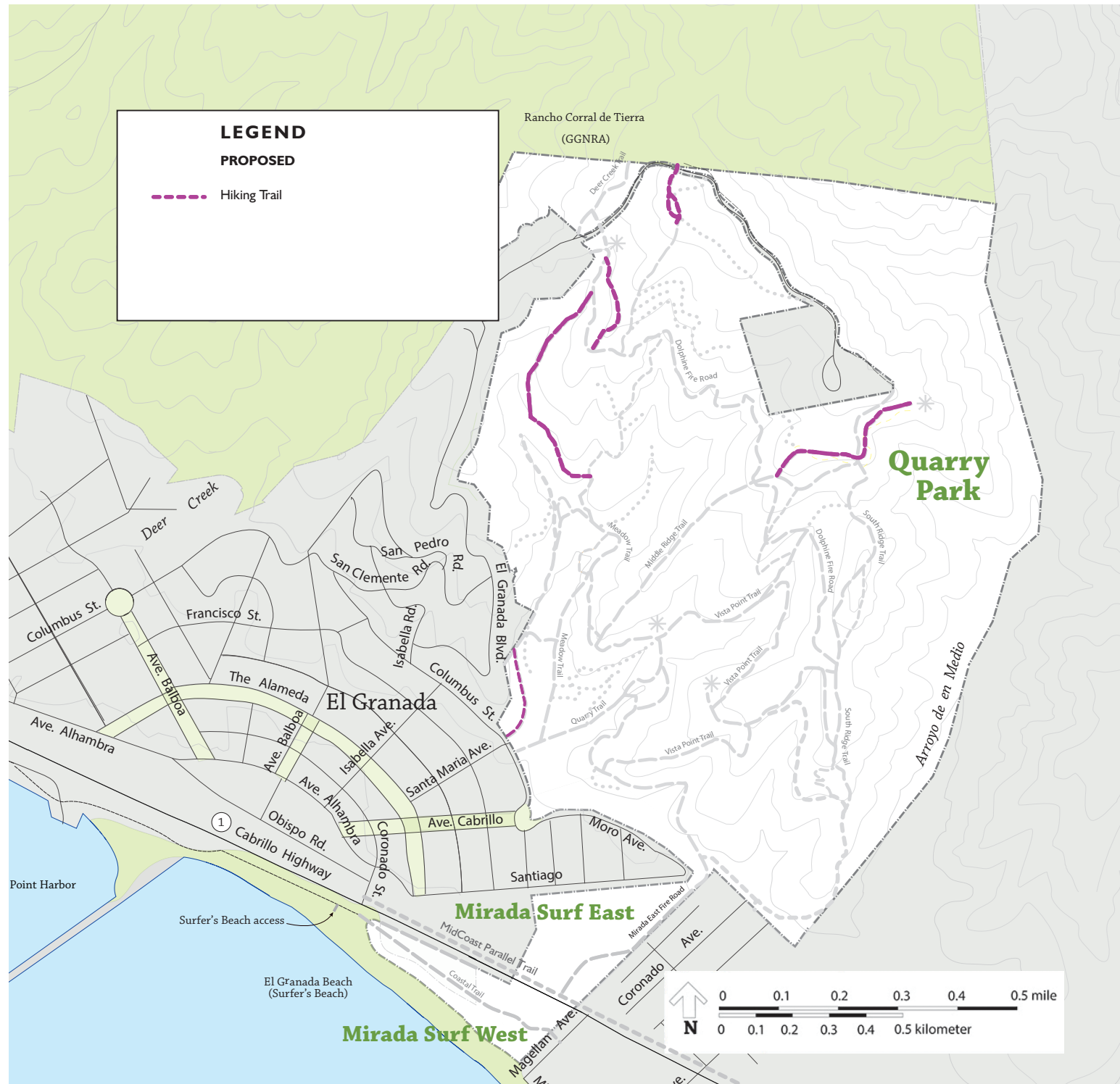


- » Provide networks for maintenance, fire management and safety
- » Designate on leash trails
 - New dog management policies were approved by the San Mateo County Parks and Recreation Commission
 - New County ordinance is being developed
 - Quarry Park grandfathers in limited dog access



RECOMMENDATIONS: TRAILS

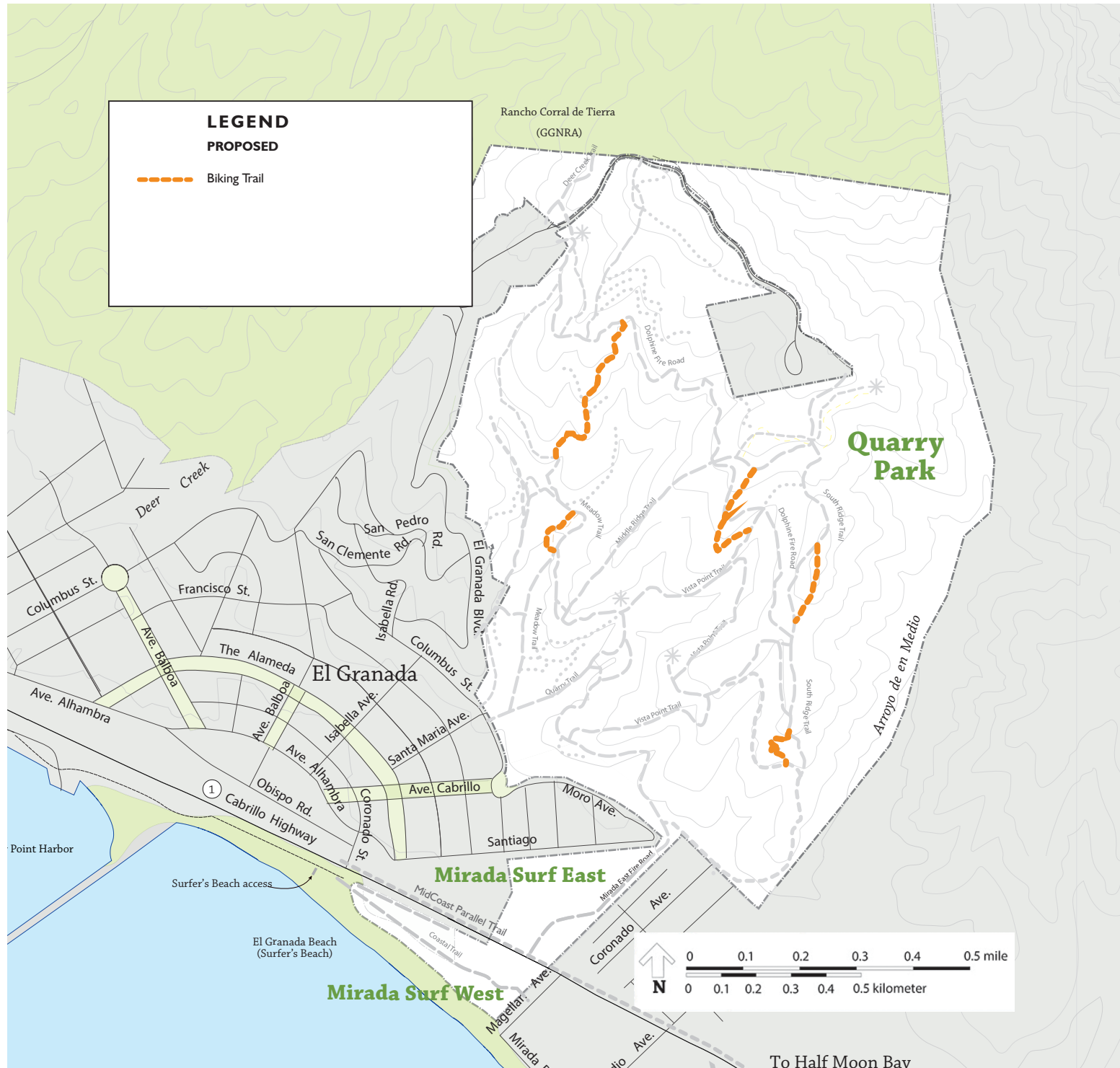
HIKING ONLY TRAILS



» Future signage will designate trail use

RECOMMENDATIONS: TRAILS

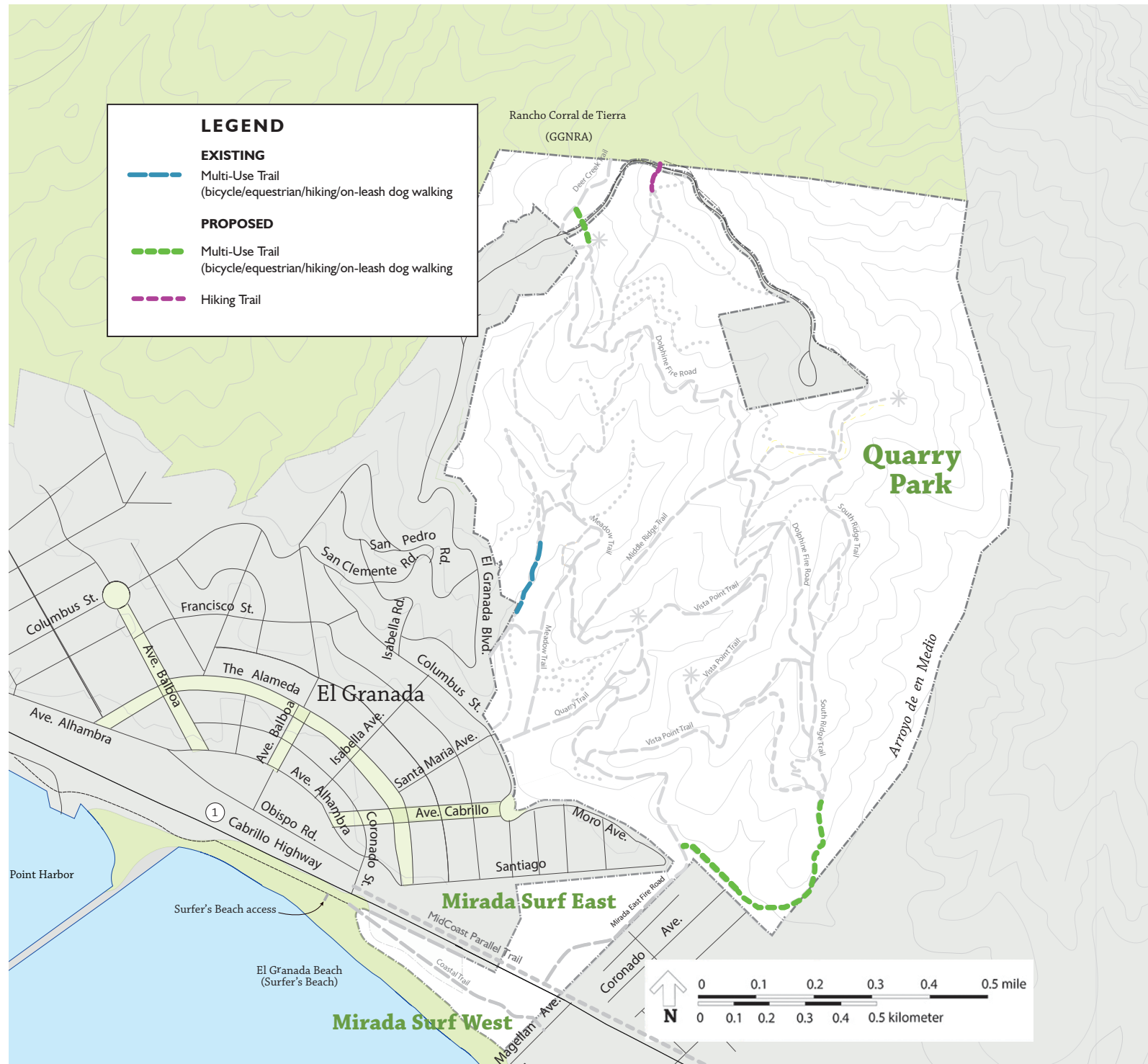
MOUNTAIN BIKE ONLY TRAILS



- » Restricted use, clear signage
- » Limited to existing established trails

RECOMMENDATIONS: TRAILS

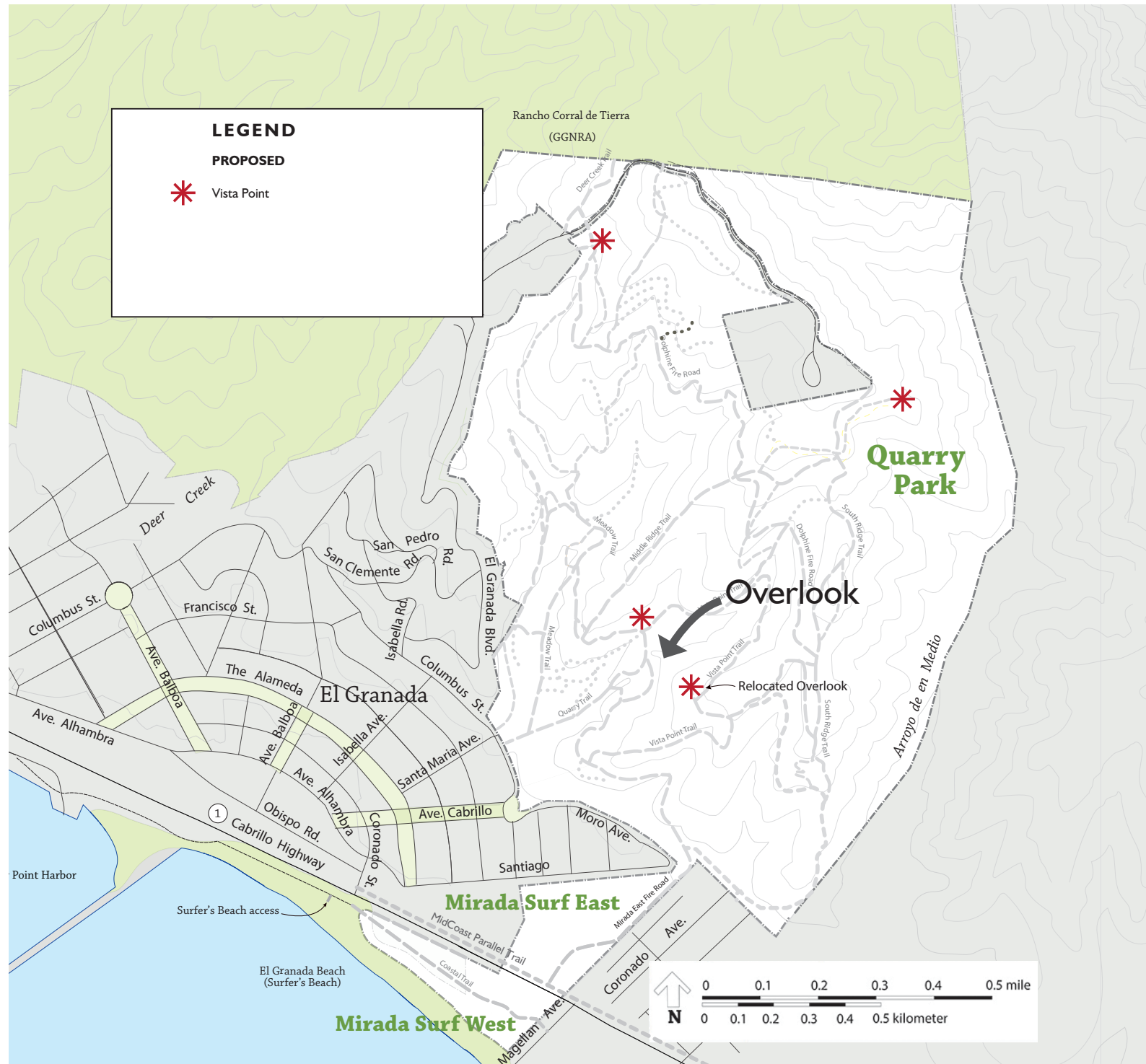
CONNECTIONS



- » Recommended connections to GGNRA
- » Connection between South Ridge Trail and Mirada Surf East to create loop
- » Access from end of El Granada Blvd.

RECOMMENDATIONS: TRAILS

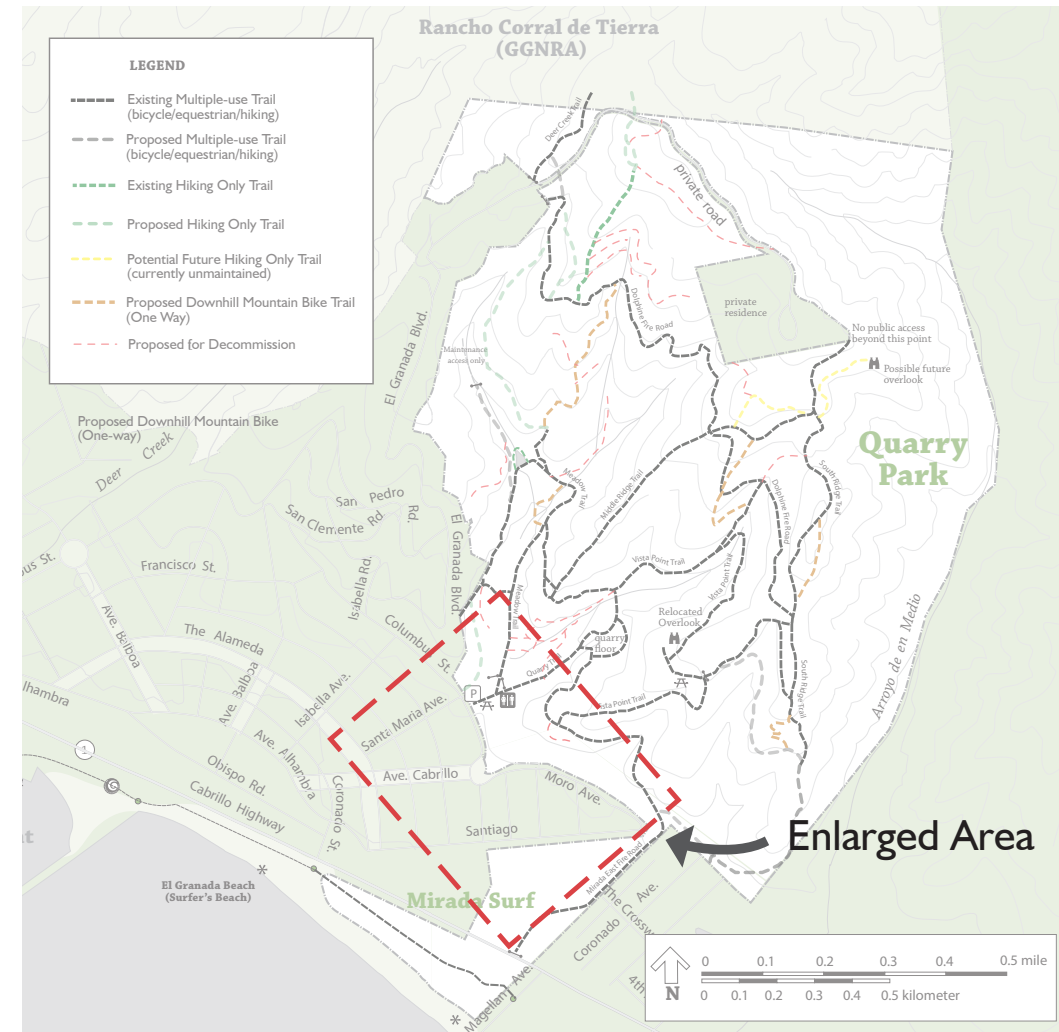
VISTA POINTS



- » Move existing overlook for safety reasons
 - Could be enhanced for future weddings and special events
- » Create new vista points with benches and signage
- » Open up views to the ocean where possible

PREFERRED PLAN

ENTRY AREA



Key Map



PREFERRED PLAN

EXPANDED PLAY AND PICNIC AREAS



- » Reservable picnic area
- » More play structures
- » More space



PREFERRED PLAN

COMMUNITY GARDEN



- » Formalize community garden process
- » Consider additional garden location

RECOMMENDATIONS

QUARRY FLOOR



- » Create amphitheater / reservable event space
 - Use fallen eucalyptus and/or other material for seating



PREFERRED PLAN

PUMP TRACK



» Explore partnership with Granada Community Services District



PREFERRED PLAN

DISC GOLF



- » Further evaluation needed
- » Explore partnership opportunities

PREFERRED PLAN

INFRASTRUCTURE



Existing storage pad: expand for additional park storage and administration

Address drainage to the street



PROJECT UPDATE

PROJECT SCHEDULE



ON-LINE SURVEY
JUNE 12, 2017 - JULY 18, 2017

Draft Master Plan
will be posted to
County Park web page



Location:
San Mateo County
Board of Supervisors Chambers
400 County Center
Redwood City, CA
4:00PM - 6:00PM

Check web site for updates
parks.smcgov.org/quarry-park



QUARRY PARK
MASTER PLAN

QUESTIONS? COMMENTS?

parks.smcgov.org/quarry-park

A green silhouette of a landscape featuring a single tree on a hill and a cluster of trees on the right. A blue horizontal bar is at the bottom left.

QUARRY PARK
MASTER PLAN

THANK YOU

parks.smcgov.org/quarry-park

A green silhouette of a landscape featuring a single tree on a hill and a cluster of trees on the right. A blue horizontal bar is at the bottom left.

QUARRY PARK
MASTER PLAN