



TUNITAS CREEK BEACH IMPROVEMENT PROJECT

PRESENTATION TO THE SAN MATEO COUNTY BOARD OF SUPERVISORS

February 2021



1. LOCATION AND CONTEXT
2. OPPORTUNITIES AND CONSTRAINTS
3. COMMUNITY OBJECTIVES FOR THE PARK
4. PUBLIC OUTREACH TO DATE
5. RECOMMENDED PARK DESIGN
6. NEXT STEPS





SITE CONTEXT





EXISTING SITE















CORE VALUES



ENVIRONMENTAL PROTECTION

The project improves the environment and leads to enhanced stewardship.



EQUITY AND INCLUSION

Diverse and non-traditional communities are involved during project development.



EDUCATION AND AWARENESS

History and nature knowledge are made accessible through meaningful interpretation.

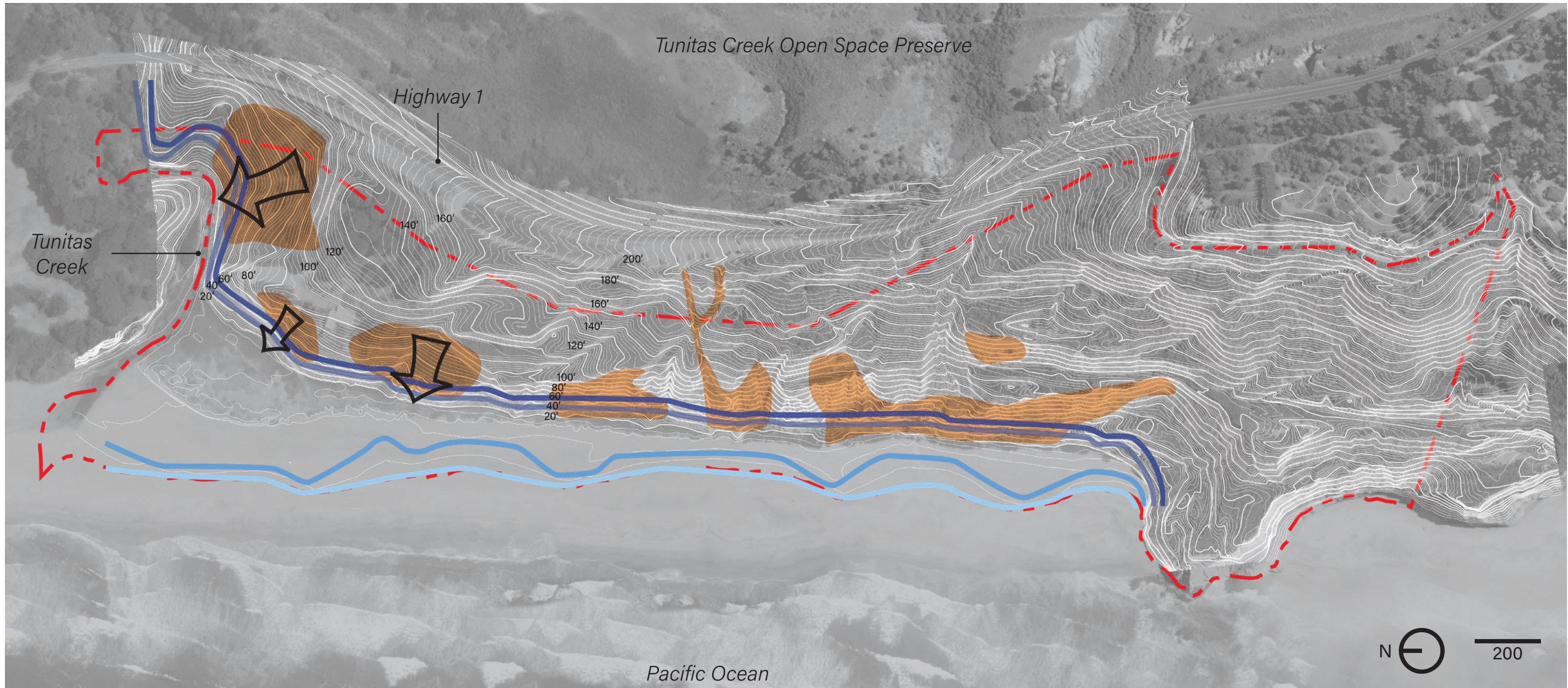


OUTDOOR EXPERIENCES

A variety of recreational experiences are available, from vista point to extended stays.



KEY CONSTRAINTS



LEGEND

- - - - - Property Line
- ← Landslide
- Eroded slopes
- Mean High Water (8.57')
- Mean High Water + Sea Level Rise (13.17')
- Base Flood Elevation (36.0')
- Base Flood Elevation + Sea Level Rise (40.6')



SUMMARY OF OUTREACH

ONGOING GENERAL SURVEY

Posted May 2020: Online survey with 350+ responses

PHASE 1 OUTREACH - INTRODUCTION AND ALTERNATIVES ASSESSMENT

June and July, 2020: Online presentation and survey with 366 responses
2,100+ video views

PHASE 2 OUTREACH - ALTERNATIVES REFINEMENT

October 21 and 22, 2020: Online public meetings in English and Spanish
October and November, 2020: Online presentation and survey with 519 responses
(364 English and 155 Spanish)

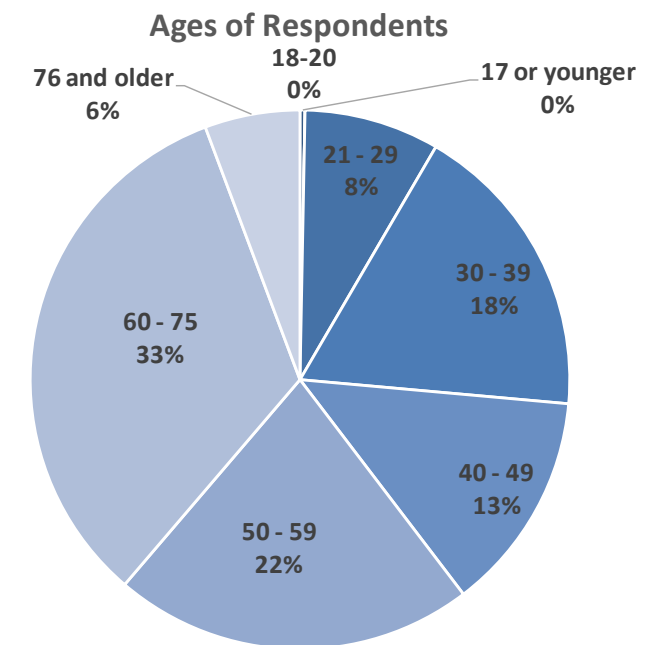
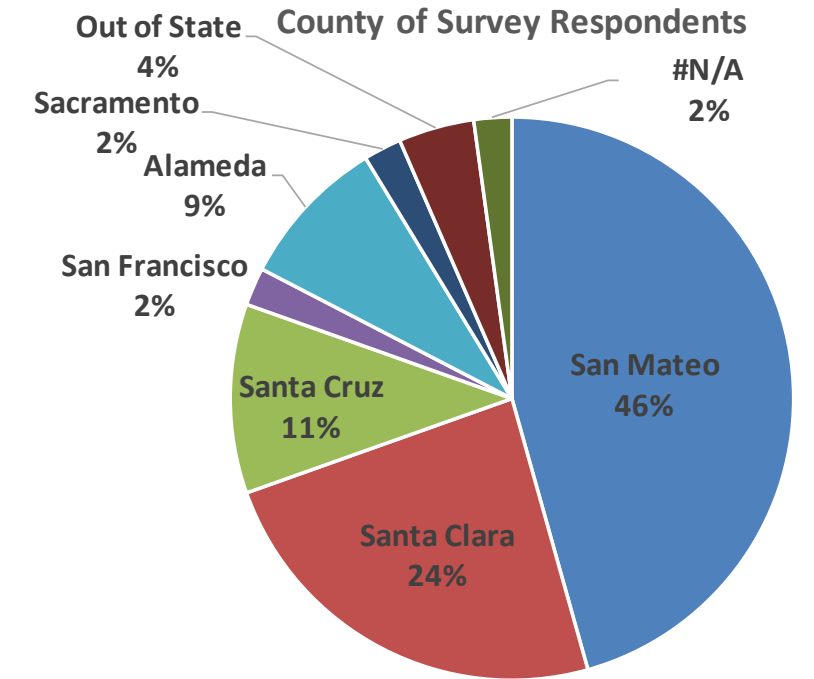
PHASE 3 OUTREACH - PREFERRED ALTERNATIVE

December, 2020 and January, 2021: Online presentation
January 27, 2021: Online public meeting in English and Spanish



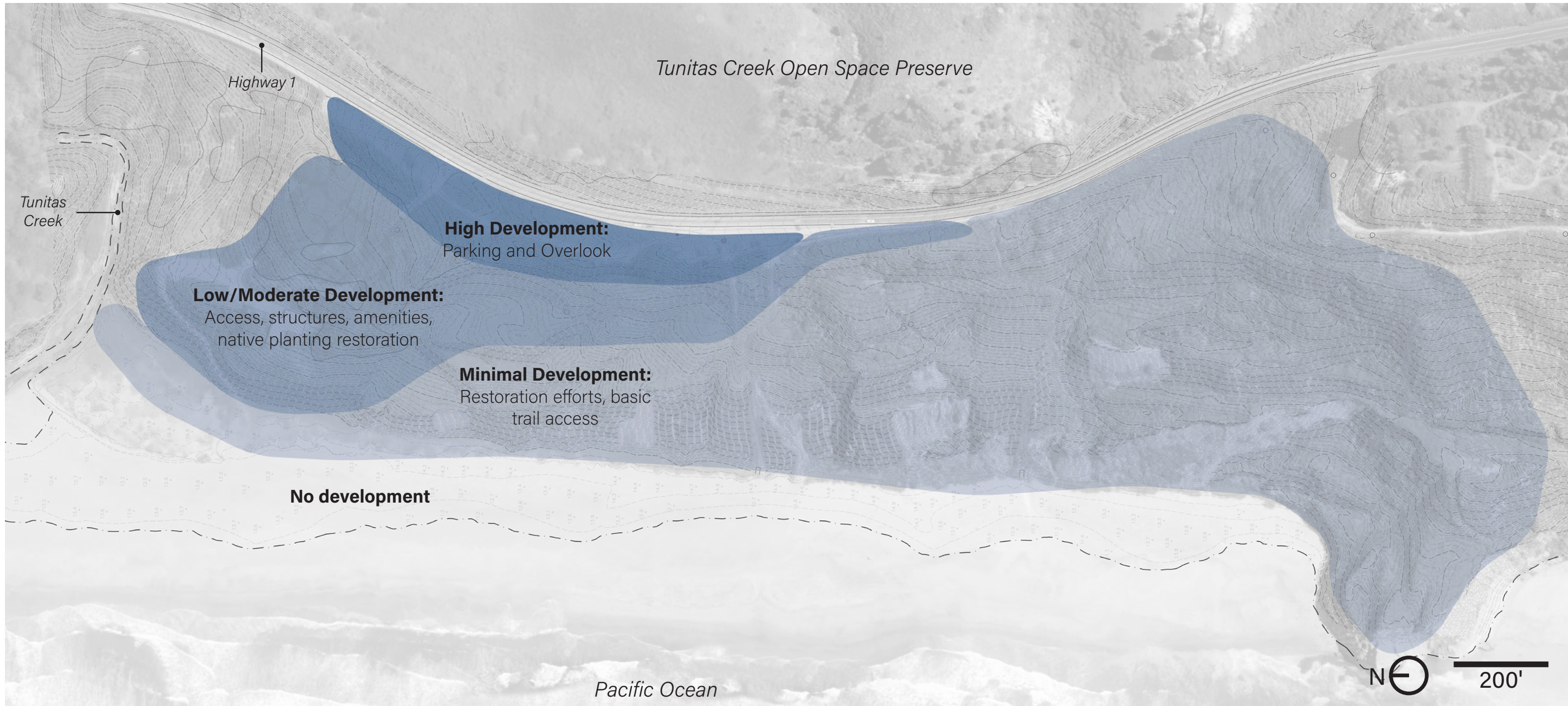
OUTREACH RESULTS

- Nearly **900 total responses**
- Few responses to the Spanish-language survey in Phase 1, but the project team's partnership with Jose Aguirre of the Community Alliance to Revitalize Our Neighborhood (**CARON**) led to **150+ Spanish responses in Phase 2.**
- People come to Tunitas to **walk, relax, picnic, and enjoy views.**
- Main priorities for improving the Tunitas Creek Beach experience centered on **land/wildlife preservation and restoration, public restrooms, accessibility, and overnight security.**
- Respondents would largely like to **keep the site natural** but do see potential for improved accessibility, safer trails, and historical educational about the site.
- Many respondents were excited to see opportunities for **community stewardship programs, wildlife viewing programs, and indigenous peoples cultural events.**





KEY TAKEAWAYS



Respondents are more comfortable with development at the top of the bluff rather than closer to the beach. The design team is using the above gradient to approach the updated design moving forward.



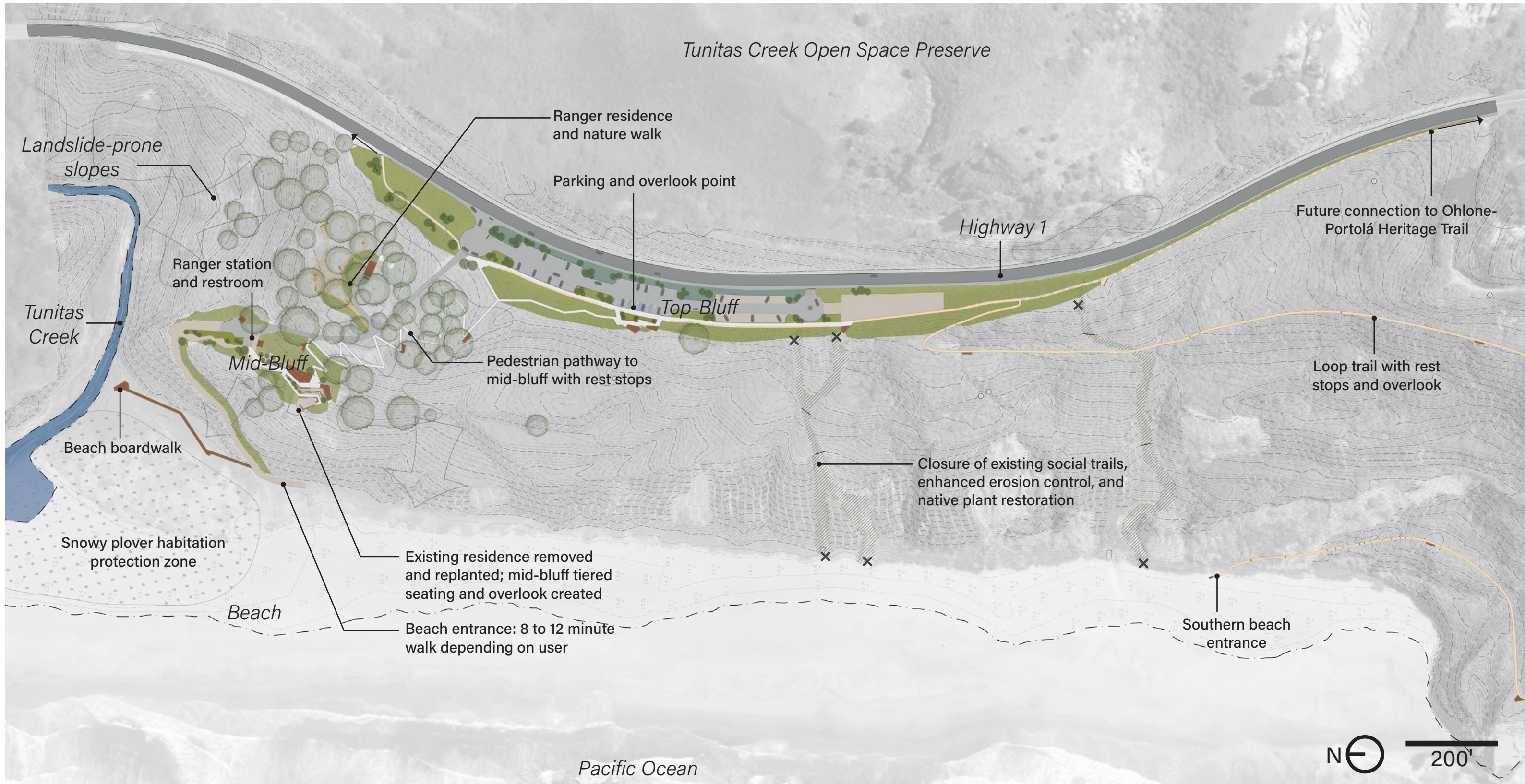
OTHER PROJECT FACTORS

In addition to public input, the team needed to consider the following factors when revising the Preferred Conceptual Design:

- **Feasibility and cost** of implementation and management of proposed improvements
- **Time** needed to construct the improvements
- Impacts on **user experience**

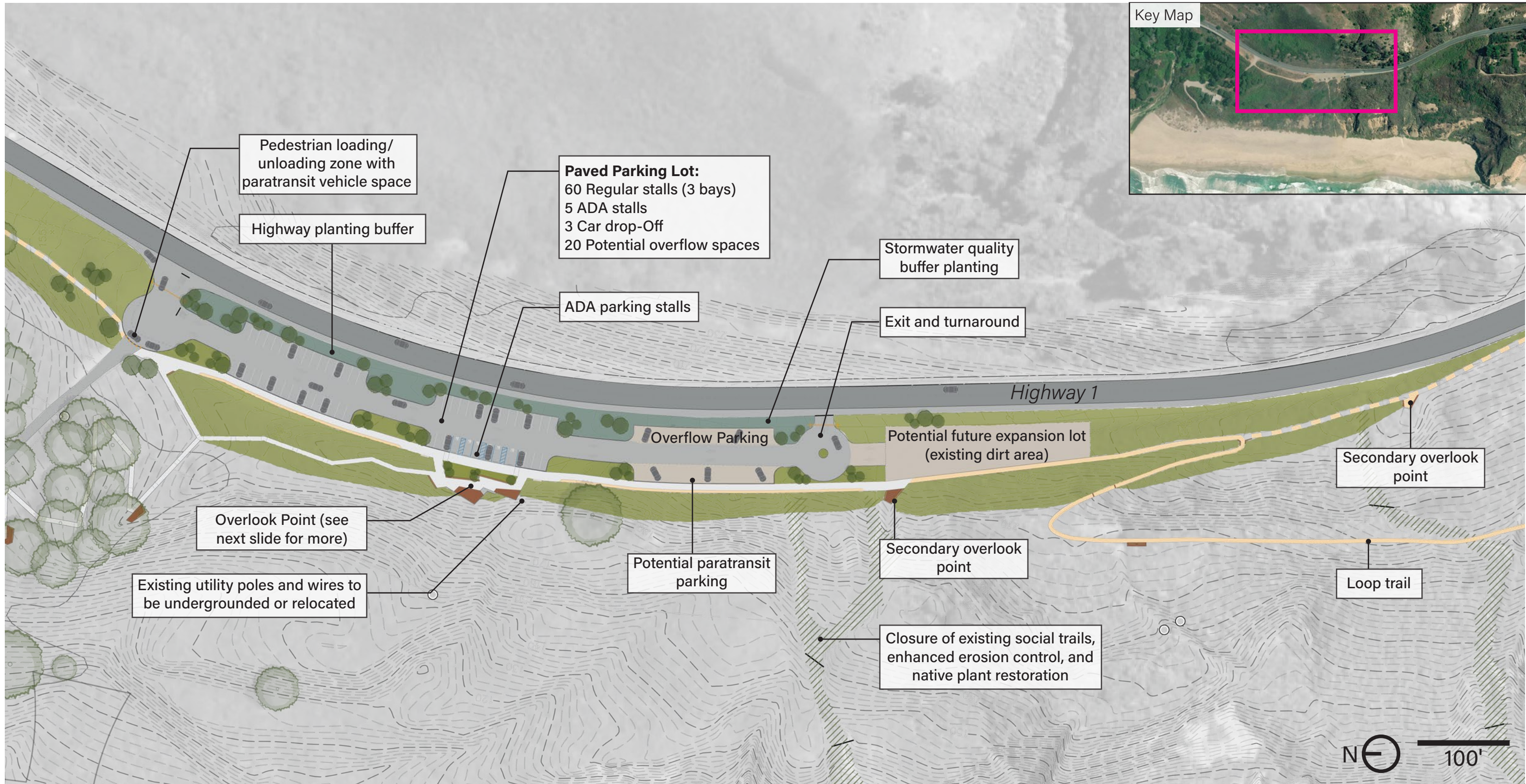


PREFERRED CONCEPTUAL DESIGN





PARKING CONDITION





TOP-OF-BLUFF OVERLOOK POINT



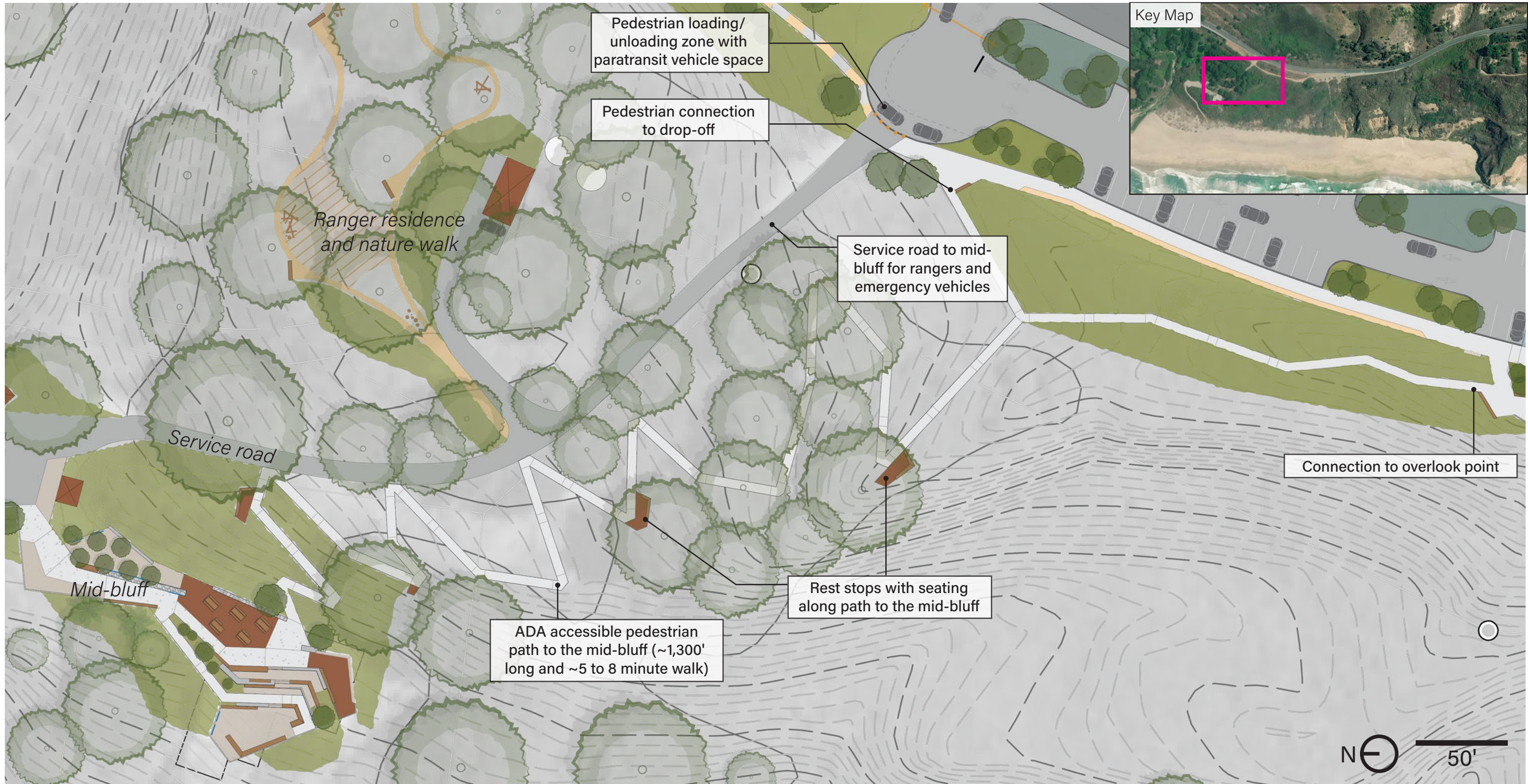
- ① Indigenous Peoples land acknowledgment plaque
- ② Seating areas
- ③ Existing planting to remain
- ④ Paved walkway
- ⑤ Pedestrian access to mid-bluff
- ⑥ ADA Parking
- ⑦ Existing utility poles and wires to be undergrounded or relocated



Existing Site Conditions



PEDESTRIAN ACCESS



MID-BLUFF FEATURES



- ① ADA accessible pedestrian path to the mid-bluff
- ② Overlook to beach and southern bluffs
- ③ Tiered seating space, interpretive panels, and overlook point
- ④ Picnic Area
- ⑤ Grove and seating area with interpretive panels
- ⑥ Access driveway for rangers and emergency vehicles
- ⑦ Ranger station and storage area
- ⑧ Public restroom
- ⑨ Restored native planting
- ⑩ Access to beach



Existing Mid-Bluff Conditions



MID-BLUFF FEATURES



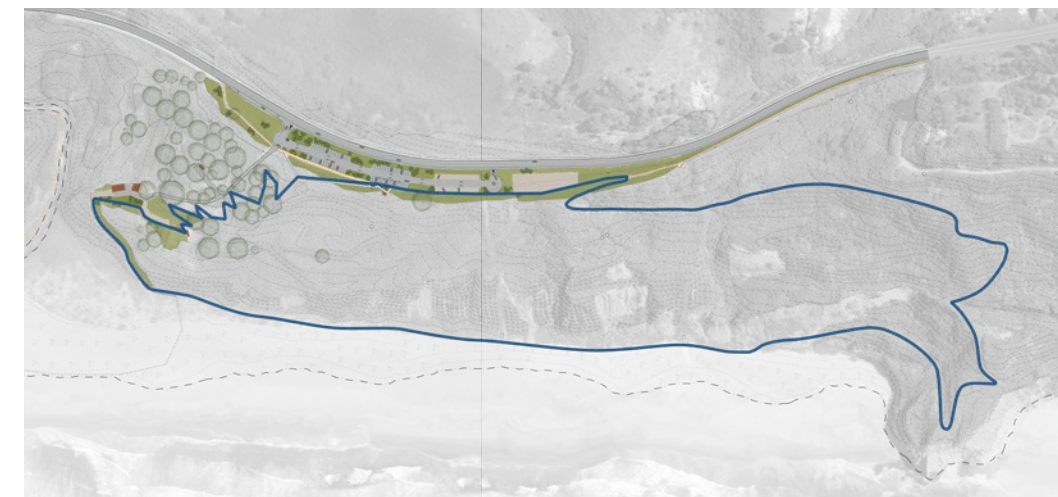
- ① Overlook to beach and southern bluffs
- ② Interpretive panels and overlook point
- ③ Tiered seating
- ④ Picnic area



Existing Mid-Bluff Conditions



TRAIL SEATING AND OVERLOOK



Full Loop Trail Around Tunitas Creek Beach



Next steps for the Tunitas Creek Beach Improvement Project:

SPRING AND SUMMER 2021

Prepare environmental document consistent with the California Environmental Quality Act

FALL AND WINTER 2021

Complete final design and permitting, including additional outreach

WINTER 2021 AND SPRING 2022

Contract bidding, award, and commence construction

SUMMER 2022

Construction

SPRING 2023

Park Opens